

CLAREMONT PLACE

The Beaumont

PLOTS 1 AND 2
THREE BEDROOM SEMI-DETACHED



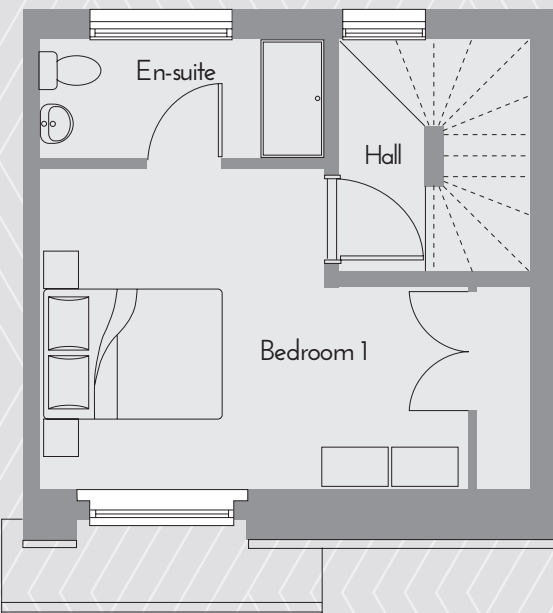
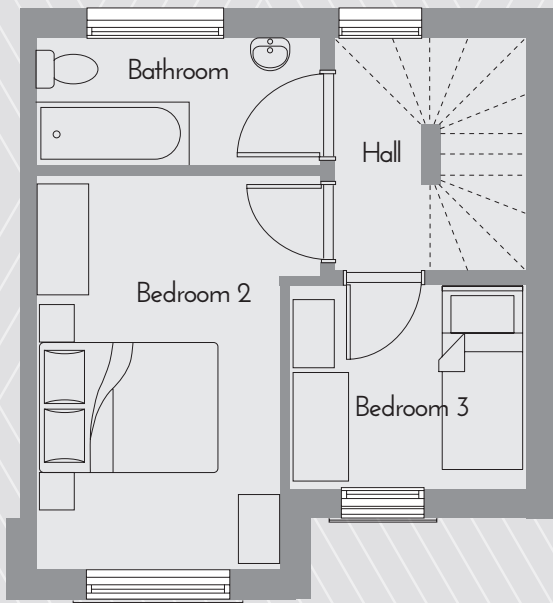
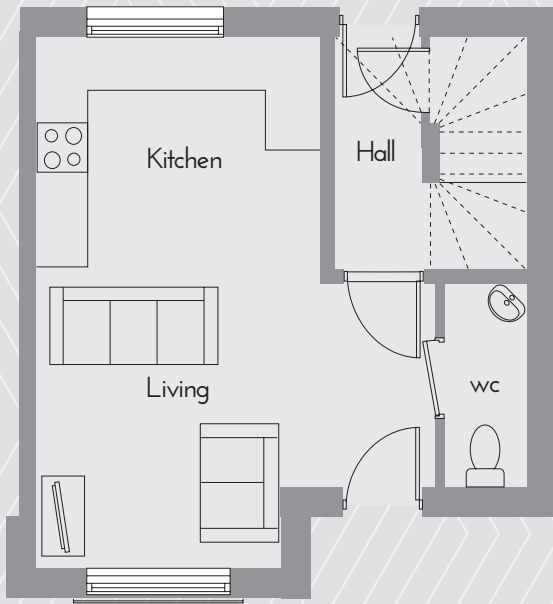
This modern semi-detached property is formed over three storeys. A hallway leads through a contemporary open-plan fitted kitchen and living space. The first floor comprises a double bedroom, single bedroom and house bathroom. The house is completed by a spacious master bedroom on the top floor, with ensuite and built-in storage.

The Beaumont

PLOTS 1 AND 2

THREE BEDROOM SEMI-DETACHED

This modern semi-detached property is formed over three storeys. A hallway leads through a contemporary open-plan fitted kitchen and living space. The first floor comprises a double bedroom, single bedroom and house bathroom. The house is completed by a spacious master bedroom on the top floor, with ensuite and built-in storage.



GROUND FLOOR	Metric (m)	Imperial
Kitchen / Lounge	5.85 x 4.40*	19'2" x 14'5"*
Toilet	2.20 x 0.90	7'2" x 2'11"
FIRST FLOOR		
Bedroom 2	4.40 x 3.10*	19'2" x 10'2"*
Bedroom 3	2.20 x 2.60	7'2" x 8'6"
Bathroom	1.40 x 3.10	4'7" x 10'2"
SECOND FLOOR		
Bedroom 1	3.60 x 5.40*	11'9" x 17'8"*
Ensuite	1.30 x 3.10	4'3" x 10'2"
Overall	91 sq m	984 sq ft

Please note all dimensions are subject to slight modifications. *max