

The Leopold

PLOTS 7, 8 & 9

FOUR BEDROOM DETACHED



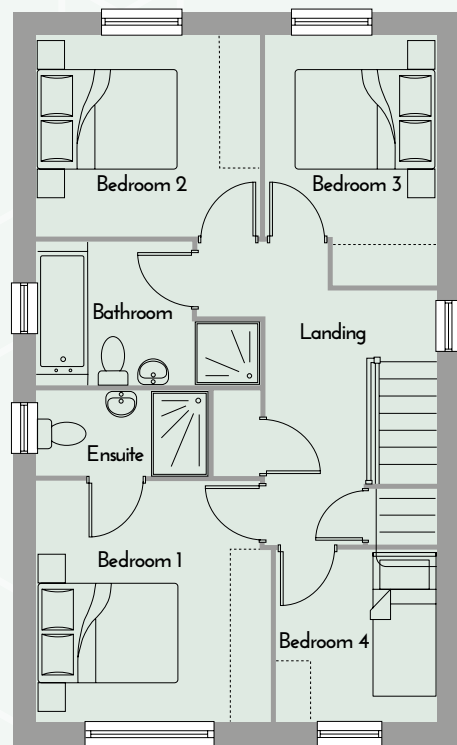
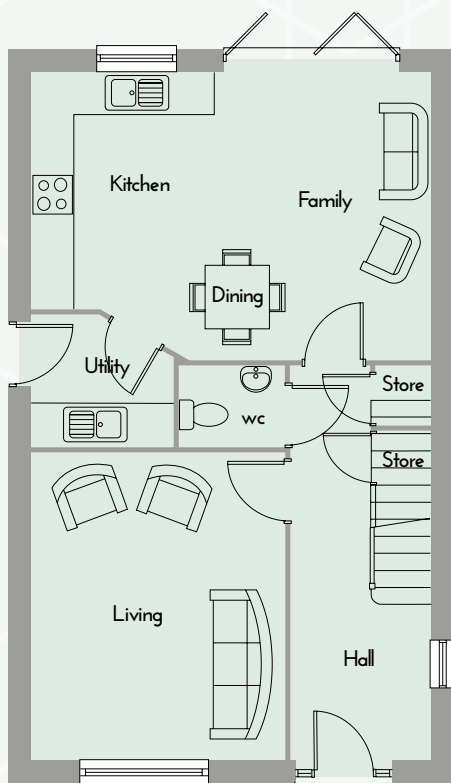
Downstairs comprises a living space and modern fitted kitchen with dining and family areas. Bi-fold doors lead out onto the rear aspect and allow for plenty of natural light to brighten the room.

Upstairs features three bedrooms, one with ensuite, a single bedroom and a large family bathroom

The Leopold

PLOTS 7, 8 & 9

FOUR BEDROOM DETACHED



GROUND FLOOR	Metric (m)	Imperial
Lounge	4.37 x 3.61	14'4" x 10'1"
Kitchen / Dining	3.37 x 5.68	11'0" x 18'8"
Utility	1.89 x 2.04	6'2" x 6'8"
FIRST FLOOR		
Bedroom 1	3.44 x 3.18	11'3" x 10'5"
Ensuite	1.22 x 2.46	4'0" x 8'1"
Bedroom 2	2.88 x 3.18	9'5" x 10'5"
Bedroom 3	3.57* x 2.45	11'9" x 8'0"
Bedroom 4	2.47 x 2.30	8'1" x 7'7"
Bathroom	2.04 x 3.18*	6'8" x 10'5"
Overall	103.95 sq m	1191 sq ft

Please note all dimensions are subject to slight modifications. *max